



The ORANGE PEARL
1 9 4 9



J. T. Arlodge
Dexter Shelly
C. D. Jones
M. B. North
Hunter Beatty — President
Harry Sutton
C. O. Chandler
A. N. Eckert



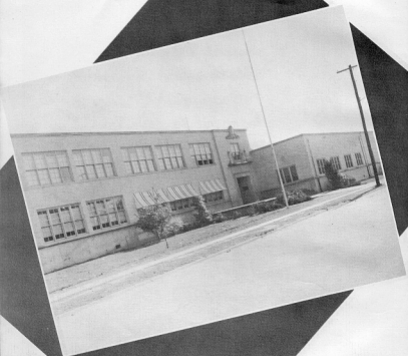
CARR JUNIOR HIGH

Foreword

We present to you, students of Stark High School, the 1949 Orange Peel. We have endeavored to give you a yearbook which in years to come will bring back pleasant memories of Stark High.

We wish to express our appreciation to the students and faculty for helping us compile the 1949 Orange Peel.

The Staff



LITCHER STARK SENIOR HIGH

THE
ORANGE
PEEL

1949



ORANGE PUBLIC SCHOOLS

ORANGE, TEXAS

OFFICE OF SUPERINTENDENT
201 FORTWORTH ST.

TO THE STUDENTS AND TEACHERS OF LUTCHER STARK SENIOR HIGH SCHOOL:

Congratulations to students and faculty members who have given so generously of their time to make this annual possible. Passing years will make this book more valuable because scenes and faces contained herein will bring back memories of happy high school days.

I hope that your experiences in Stark High School have caused all of you to develop an intellectual curiosity that will induce you to THINK and caused a desire for more education; have developed a cheerful attitude toward life, and a desire to be a valuable member to your family, your community and to the world.

C. D. Chandler



DOYLE ATTAWAY
TRADE & INDUSTRY '47-'48
VOCATIONAL INDUSTRIAL CLUB '49



MARGARET BARRETT
EDITOR—ORANGE PEEL '48
TRAFFIC COMMITTEE
GULL AND SCROLL



BARBARA BAUER
DISTRIBUTIVE EDUCATION CLUB
D. E. STATE DELEGATE



MARGARET BEATY



RUTH BEDNAR
CHORAL CLUB
FUTURE HOMEMAKERS
OF AMERICA



BETTY BELLE
CHORAL CLUB
CHORAL WORKSHOP



GERALD BELL



PEARCE BENEKE
SENIOR FAVORITE '49
FOOTBALL '46-'49



VIRGINIA BERWICK
24 END CLUB



RONALD BOGGIE

FOOTBALL MANAGER '47-'48
BASKETBALL MANAGER '47-'49
BASEBALL MANAGER '47-'48



JACKIE BOND

BASKETBALL '49
BASEBALL '47-'48
BUILDING AND TRADES '49



RAY BRISTER



LEO BROUSSARD

TRACK



BILLIE RUTH BROWN

ISH END CLUB
FUTURE HOMEMAKERS
OF AMERICA



MAMIE JO BROWN

FUTURE HOMEMAKERS
OF AMERICA
TREASURER F. H. A.
SPORTS CLUB



BRAD BURCH-MORTHEW



NORA BURKE

CHORAL CLUB



FLORRIA LEE CALDWELL

FUTURE HOMEMAKERS
OF AMERICA



GERALDINE CARPENTER



MARY LOUISE CARTER
BENGAL GUARDS
CHORAL CLUB
PRESIDENT—BENGAL GUARDS



LEA MAE CHANDLER



HOWARD CHENOWITH
ANNUAL STAFF



MALCOLM CLARK
BASKETBALL '46-'45, '48
BASEBALL '49
FUTURE TEACHER ASSOCIATION



DONNA NAN COCHRAN
BENGAL GUARDS



JOE COLBURN
BENGAL LANCERS '47-'48
SPANISH CLUB '48
LANCERS ORCHESTRA '48



BOBBY JEAN COLE
DISTRIBUTIVE EDUCATION CLUB



JANIE CONDREY
SPANISH CLUB '48
TIGER SCRATCHES



Bernes Cooper
44

BERNES COOPER
TRADE AND INDUSTRY '47-48
VOCATIONAL INDUSTRIAL CLUB



DONNA COPPINS
SPANISH CLUB
CHORAL CLUB
CHORAL WORKSHOP



NANCY COUVELLON
THREE MAID '47-48
STUDENT BODY TREASURER
BEAUTY QUEEN '48



NORMA COWGER
SEVAG GUARDS
SIGNAL DRUM MAJOR
SEN. END CLUB



ROBERT L. DAVIS
VOCATIONAL INDUSTRIAL
CLUB '49



THOMAS DAY
TRADES AND INDUSTRIES '49
BUILDING AND TRADES '49
VOCATIONAL INDUSTRIAL '49



JUNE DEPWE
BEAUTY NOMINEE '48



LONNIE DICKY
FUTURE FARMERS OF AMERICA
TRADES AND INDUSTRY
DISTRIBUTIVE EDUCATION



JANIE SUE DILLS



MAUDE LEE DIXON



EMILY DODGE
BENGAL GUARDS '48-'49
BENGAL GUARD COUNCIL '48
HISTORIAN OF BENGAL GUARDS '48



MONTEZ DODSON
CHORAL CLUB
SENATE



ALLEN DORMAN
DISTRIBUTIVE EDUCATION
FUTURE FARMERS OF AMERICA



LILLIAN FAE DORMAN



BILLY DOTSON
BENGAL LANCERS



LEOLA DOUGHARTY
EPA END CLUB



RAY DUDLEY
BOOKING '48-'49
BENGAL LANCERS '47-'49



BETTY ZANE DUNN
SPANISH CLUB



BEVERLY FIFE
SENATE '46-'48
TIGER SCRATCHES
PRESIDENT—FUTURE TEACHERS
ASSOCIATION



BARBARA FEW
TIGER SCRATCHES
HOBSON CLUB PRESIDENT '48



BOB FISK
FOOTBALL '48
BASEBALL '47-'49
BASETBALL '49



BOYCE FISK
BUILDING AND TRADES '49



LOUISE EDMUNDS
MONGAL GUARDS
SPANISH CLUB
BASKETBALL '47



JOSEPHINE FITCHETT
DUCHOS '49
SENATE
GOOD SPORTSMANSHIP
LEAGUE



FRED FONTENOT
DISTRIBUTIVE EDUCATIO
CLUB



HELEN FORD
CHORAL CLUB



CLIFFORD FOREMAN



KAY FRANKLIN
FOOTBALL '47
TRADES AND INDUSTRY '48
BUILDING AND INDUSTRY '49



CHRISTINE GARLINGTON
TIGER SCRATCHES
SHS END CLUB
FUTURE HOMEMAKERS
OF AMERICA



MARIAN GIBBS
SENATE '49
SOCIETY ENTOR TIGER SCRATCHES
CROWDS '46-'48



EDITH GISCLAIR
SHS END CLUB
FUTURE HOMEMAKERS
OF AMERICA



DANNY GORDON
FOOTBALL '45-'48
TRACK '48



TOMMY GREEN
VOCATIONAL INDUSTRIAL
CLUB



DAVID S. GRIFFIN
TRADE AND INDUSTRY '47-'49
VOCATIONAL INDUSTRIAL
CLUB



JOE GRIFFIN
TRACK '48
BUILDING AND TRADES '48



LOYD GRUBS
BASKETBALL



BETTY GUIDRY
FOOTBALL MAID '49
FUTURE HOMEMAKERS
OF AMERICA



MARY LOU GUIDRY
SHS END CLUB



NORBERT GUILLOTT
TRADE AND INDUSTRY '48
VOCATIONAL INDUSTRIAL
CLUB '49



CARL HALEY
DISTRIBUTIVE EDUCATION CLUB



FRED HALEY
BASKETBALL



FREDUCA HALEY
BENGAL GUARDS '46-'49
BENGAL GUARD COUNCIL '49
SPANISH CLUB '49



BILLY HALL
DISTRIBUTIVE EDUCATION CLUB
FOOTBALL



BOBBY HALL
BASKETBALL '48
SEN. ENG. CLUB PRESIDENT '48



WELDON HALL
FUTURE FARMERS OF AMERICA '47
BUILDING AND TRADES '47-'49
VOCATIONAL INDUSTRIAL CLUB '49



MAXINE HAMMERLY



WYNELL HAMMOND



RUBY HARDIN

BASKETBALL '47-'48
STUDENT BODY SECRETARY '48
GOOD SPORTSMANSHIP AWARD



STELLA HARRIS

SENATE '48
FUTURE HOMEMAKERS OF
AMERICA '48



BETTYEANNE HATCHER

CHANGE PEEB '47
FUTURE TEACHERS
ASSOCIATION '49



ALICE HAYNES

ENR END CLUB



RALPH HENDERSON



DARRELL HODGE

FOOTBALL '48
INTRAMURAL BASKETBALL '47
INTRAMURAL BASKETBALL '47



BETTY HOFFPAUIR

ENR END CLUB
SPANISH CLUB



FRED HOGG

BASKETBALL '47-'48
WINGAL LANCERS '48-'49
LANCERS ORCHESTRA '48-'49



BILLY RAY HOPKINS



HESSIE LOU HOWARD
 BENGAL GUARDS '46, '47
 CHORAL CLUB
 FUTURE TEACHER ASSOCIATION



CHARLES HUBBARD
 TRACK



HELEN HUDSON
 BASKETBALL '49



LA VERN HUDSON
 DISTRIBUTIVE EDUCATION
 TIGER SCRATCHES



BARBARA INMAN
 BASKETBALL '48
 CHANGE PEEL '47, '48
 TIGER SCRATCHES '48



SANDY JACKSON
 BENGAL GUARDS



MARY ALICE JACOWAY
 BH END CLUB



EULA LA PLANT JETER
 FUTURE HOMEMAKERS
 OF AMERICA



CHESTER JIMERSON
 TRADE AND INDUSTRY
 VOCATIONAL INDUSTRIAL CLUB



ALICE JOHNSON
PRESIDENT OF FUTURE
HOMEMAIDS OF AMERICA



MALCOLM JOHNSON



MORRIS JOHNSON
DISTRIBUTIVE EDUCATION
STATE DELEGATE



DAVID JOURNEY
DISTRIBUTIVE EDUCATION CLUB



JORETTA JOYCE



BEVERLY KAFFLE
BENGAL GUARDS
BENGAL GUARDS ORCHESTRA
VICE PRESIDENT BENGAL
GUARDS COUNCIL



BOB KELLEY
FOOTBALL '48
CHORUS '47-'49
TRACK '49



SUE LAMANCE
CHORAL CLUB



MILDRED LAMBERT
BASKETBALL '48
ISH END CLUB



ROBERT LIVINGSTON
 BENGAL LANCERS
 INTRAMURAL BASKETBALL
 FUTURE FARMERS OF AMERICA



BILLY LONG
 TRACK '48
 BASEBALL '46, '48
 SPANISH CLUB



BARBARA ANN LUFT
 QUEEN '49
 HEAD CHEERLEADER
 TIGER SCRATCHES



WILMA McCARVER
 FUTURE HOMEOWNERS
 OF AMERICA



ELVIS McQUIRE
 FUTURE FARMERS OF AMERICA
 DESTRUCTIVE EDUCATION
 TRACK '48



NORMAN McLELLAN
 BENGAL LANCERS '43, '45
 TRACK '49
 LANCERS ORCHESTRA '48, '49



WILLIAM MacDonald
 PRESIDENT SENIOR CLASS
 PRESIDENT STUDENT BODY '49
 FOOTBALL



TONY MacMILLAN
 BENGAL LANCERS



MARY JO MCKINNEY
 CHORAL CLUB

Bill M. MacDonald



MILTON MARTIN
FUTURE FARMERS OF AMERICA



ISAAC MATHEWS
TRADE AND INDUSTRIES
VOCATIONAL INDUSTRIAL CLUB



GEORGE MELVIN
BUILDING AND TRADES
TRADE AND INDUSTRIES
TREASURER OF VOCATIONAL
INDUSTRIAL CLUB



JOYCE ANN MENDOZA
BHS END CLUB '45
FUTURE HOMEMAKERS
OF AMERICA '46, '47



BETTY SUE MILLS
CHORUS
FUTURE HOMEMAKERS
OF AMERICA



JEWELL ANN MORGAN
CHORUS



DONALD MOORE
BASEBALL '49
FOOTBALL '49, '44



THILBY MORRIS



DON MOSS
TRACK '47, '49
LANCEING ORCHESTRA



J. B. NIXON
TRADES AND INDUSTRIES
VOCATIONAL INDUSTRY



SALLY ANN NIMITZ
FAVORITE '47, '48
DUCHESS '48
TIGER MAID '49



RUCIE ODOM
FUTURE FARMERS OF AMERICA



BETTY SUE OLDS
DISTRIBUTIVE EDUCATION CLUB



HOWARD OWENS
FOOTBALL '3' '47
FOOTBALL 'A' '48
BASEBALL '47, '49



JOE PATRONELLA



JACK PATTON





DAVAYNE PARRISH
 TIGER SCRATCHES
 FUTURE HOMEMAKERS
 OF AMERICA—SECRETARY



BETTE PEARCY
 CHORUS
 FUTURE HOMEMAKERS
 OF AMERICA



PHILIP PEARSON
 BAND '46, '47
 FUTURE FARMERS
 OF AMERICA '46, '48



DONALD PENGELEY
 BUILDING AND TRADES
 VOCATIONAL INDUSTRIAL CLUB



CHARLES FERROT
 BASKETBALL



L. J. PERRY



CHARLES FEVETO
 FUTURE FARMERS OF AMERICA



JOYCELYN FEVETO



BONNIE JUNE PICKETT
 DISTRIBUTIVE EDUCATION CLUB
 FUTURE HOMEMAKERS
 OF AMERICA



GENEVA POLLY



RAY RAMIREZ
FOOTBALL
TRADE AND INDUSTRIES



JOHN RATLIFF
TRADE AND INDUSTRIES



MILLEDGE RATLIFF
DISTRIBUTIVE EDUCATION CLUB



LERMA RECTOR
DISTRIBUTIVE EDUCATION CLUB



DOROTHY REESE
SN ENO CLUB



KENNETH REESE
FOOTBALL '46-49
BASKETBALL '47-49
BASEBALL '47-48



GLEN RILEY
FUTURE FARMERS OF AMERICA



JOAN ROSEGRANT



DEWEY ROSS
TRADES AND INDUSTRIES
DESTRUCTIVE EDUCATION



JAMES SANDERS
TRADES AND INDUSTRIES



JO ANN SANDERS
SENATE '47-48
CUTL AND SCROLL
ASSP. EDITOR TIGER SCRATCHES



ETHYLE SANDLIN
SPANISH CLUB '46-47
LATIN CLUB '48



HAROLD SCALES
FUTURE FARMERS OF AMERICA



JETTIE PEARL SCHMIDT
SPANISH CLUB
FUTURE TEACHERS ASSOCIATION



DOROTHY SCOTT
SH END CLUB '49
SPANISH CLUB '46-47



JENEANE SERURTINE
SENATE
FUTURE HOMEMAKERS
OF AMERICA



MARLENE SHIRLEY
SPANISH CLUB



DOC SHRYOCK
DEBATE CLUB
TRACK '48
SENATE



MARLENE SHULER



GWEN SIMMONS
TIGER SCRATCHES
ISH END CLUB



LUTCHER SIMMONS
FOOTBALL '46-'48
SENATE '47-'48
RENEWAL LANCERS '39-'49



MELBA SIMMONS
HOME NURSING
FUTURE HOMEMAKERS
OF AMERICA



JEANETTE SIMONEAUX
FUTURE HOMEMAKERS
OF AMERICA '46-'49



JAMES SKEELER
FOOTBALL '46-'47



JEANETTE SKINNER
SENATE
ISH END CLUB



LETHA SKINNER
FUTURE HOMEMAKERS
OF AMERICA



CHARLES SMITH
 BENGAL LANCERS
 TRACK '48-'49
 LANCERS ORCHESTRA '48-'49



GEORGE SMITH
 BENGAL LANCERS



GENEVA SPARKS
 FUTURE HOMEMAKERS
 OF AMERICA
 PRESIDENT OF DISTRIBUTIVE
 EDUCATION CLUB



GERALDINE STANDLEY



JACKIE STEPHENS
 TIGER SCOUTS STAFF
 SHI EXO CLUB
 BENGAL GUARDS



BARBARA ST. GERMAINE
 BASKETBALL '49
 ANNUAL STAFF
 BENGAL GUARDS '48-'49



JOE STOCKMAN



MARIE STROTHER
 CHORAL CLUB
 CLASS OFFICER '48
 SENATE



OPAL STROUD



VIRGINIA SUGGS
FUTURE HOMEMAKERS
OF AMERICA '46-47



BENNIE TALMADGE
BUILDING AND TRADES
VOCATIONAL INDUSTRIAL
V. AND I. DELEGATE



ELSIE MAE TAYLOR
SENATE
DUCHESSE



ROBERT THOMAS
FOOTBALL "B" SQUAD
FUTURE FARMERS OF AMERICA
BENGAL LANCERS



WARRENNE THOMAS
CHORAL CLUB
FUTURE HOMEMAKERS
OF AMERICA



CHARLES TONY
DRAMA CLASS '47-48



BILLY VAIL



BILLY WARD
DISTRIBUTIVE EDUCATION



NAOMI WATKINS
RH END CLUB



JAMES WHARTON
FOOTBALL '47-'48



HATTIE WINFREY
LATIN CLUB '48
PRESIDENT LATIN CLUB



HILDA WADE
LATIN CLUB '48
SENATE '48-'49
FUTURE HOMEMAKERS
OF AMERICA



PATSY WADE
FUTURE HOMEMAKERS
OF AMERICA
VICE PRESIDENT OF F.H.A.



JEAN WALSH
SH END CLUB
FUTURE HOMEMAKERS
OF AMERICA



FRANCES WEAVER
HOME NURSING
FUTURE HOMEMAKERS
OF AMERICA



SKIPPER WEAVER
BASKETBALL '47-'49
BASEBALL '47-'49
DUKE '48



JOYCE WELCH
FUTURE HOMEMAKERS
OF AMERICA



VIOLA WHIDDON
SH END CLUB



CHARLES EARL WHITAKER
 BENGAL LANCERS
 BENGAL LANCERS ORCHESTRA



FLAVIA LOU WILLEY
 ISH BMO CLUB '49
 TIGER SCRATCHES



JIMMIE GAY WILLIAMS
 BENGAL GUARDS



CHARLENE WIMBERLEY



JOHNNY WOODCOCK



JULIAN YARBROUGH
 BASEBALL



BILLY DAN YOUNG
 SPEECH
 TIGER SCRATCHES



GENEVIEVE ZIRLOTT
 FUTURE HOMEMAKERS
 OF AMERICA
 REPORTER ECONOMICS CLUB
 PARLIAMENTARIAN OF

ROYAL COURT



KING

Bobby Crew

QUEEN

Barbara Luft

DUKES

*Don Granger
Bob Fisk
Kenneth Reese
William McDonald
Skipper Weaver*

PRINCES

*Fearce Bencke
Allen Barkhart
William Olmer*

DUCHESES

*Sally Nimitz
Elsie Mae Taylor
Josephine Fitchett
Joan Parloh
Nancy Covellon*

PRINCESSES

*Ruby Hardin
Agnes Harris
Carolyn Laysen*

JESTER

Charles Barry

FAVORITES



Pearce



Ruby



Agnes



Allan



Billy



Carolyn

SENIOR



Pearce Bencke



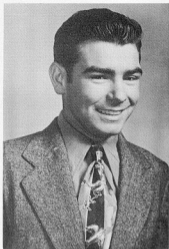
Ruby Hardin



JUNIOR



Allan Burkhart



Agnes Harris

SOPHOMORE



*Here wishing you
all the happiness
the world.
Billy Oliver*



Billy Oliver



Carolyn Logan

*To a well boy
Best of luck always
Carolyn*



FACULTY



Charles Myres
Chemistry & Physics



Mrs. James Nell
Guidance Counsellor



Ruth Wilder
Art



Sudie Lee Nelson
Homemaking



Della Peets
Homemaking



Maggie Wren Williams
Biology



Hazel Duice
Language Arts



Grace Crump
Chorus



Glenodine Pippin
Commercial Arts



S. R. Davis
Physical Education



Mary Boyvey
Librarian



Mrs. John E. Wheeler
Language Arts



Nell Avrett
Spanish, Language Arts



Ethel Johnson
Social Studies



Joan Dennis
General Science



Carolyn Warren
Social Studies



Pauline Moran
Social Studies



Peggy Littlefield
Social Studies



Dana Hill
Language Arts



C. L. McCarron
Physical Education



Ethel Skinner
Mathematics



Ruby M. Reese
Language Arts



Doris Castory
Physical Education



Eddie Mae Scarbrough
Director Campus
Nursery School



Gwen Bowen
Social Studies
Language Arts



Marie Annall
Commercial Arts



Annie Mae Warren
Algebra



Irma Hultquist
Librarian, Cary Jr. High



Mrs. Ence Hubbard
Mathematics



L. N. Skinner
General Shop



Mrs. Lourena Cook
Art



Honie Lou Laster
Journalism, Language Arts



Lillian B. Hughes
Commercial Arts



Lou Stewart
Physical Education



Clementine Briley
Social Studies



Mrs. R. L. Davis
Secretary of
Guidance Director



Fanny Jackson
Mathematics



Geneva Corder
Health



Zulma Moore
Lunchroom Manager



Charles W. Bowen
Mathematics
Biology



V. E. Ramsey
History
Student Coordinator



Estelle Fort
Music



Esther Johnson
Language Arts



Ann McLean
Mathematics



Emma McGreevy
Mathematics



Betty A. Swegertinsky
Language Arts



Lucille Ramsey
Language Arts



A. G. Hill
Social Studies



Mrs. Herbert J. Sturcel
Guidance Counsellor



Floyd Gokenolpher
History



Carroll Pippin
Shop



Charles Enell
Shop



Clarence Bridges
Physical Education



H. L. Howard
Industrial Arts



Karl Wadespohl
Music



Geneva Ramsey
Mathematics



Thelma Jo Lange
Physical Education



J. V. Atkins
Agriculture



Sherman L. Young
Distributive Education



Mary E. Everheart
Language Arts



Mrs. J. R. Chambers
Language Arts



Mrs. Inez Kennedy
Social Studies



H. B. Sallis
Language Arts



Mr. J. R. Johnson, Jr.
Social Studies



Yvonne Martin
Language Arts & Speech



Carolyn Warren
Social Studies



Mrs. Virginia Sims
Language Arts



Mrs. Janice Terry
Study Hall



Betty Wade
Language Arts & Speech



Peggy Littlefield
Social Studies



Lucile Hanson
Mathematics



Helen Carr
Supervisor of
Instructional Material



Laura Bowler
Junior Accountant



Beas J. Smith
Secretary to
Miss Carr



La Vada Carter
Secretary to
Maintenance Department



Norma Scott
Coordinator,
Language Arts



Eva T. Athas
Director, Pupil
Personnel Service



H. J. Free
Director of
Curriculum



Virginia Webb
Secretary to
Mr. Free



A. W. Eckert
Business Manager



Winnie C. Carter
Tax Collector

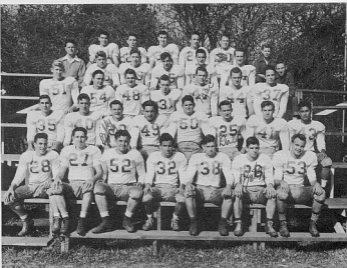


Louise Burch
Secretary to
Tax Collector



Mary Turner
Secretary to
Superintendent





"A" SQUAD

First Row: Left to Right — Wayne Baugh, Charles McAten, Wendell Harris, Howard Owens, Walter Hilliard, Don Granger, and William Herring.

Second Row: Walter Williams, Robert Goodson, Billy Olive, Charles Honeycutte, Danny Gordon, Dale Lewis, Glenn LaComb, and Tico Ramirez.

Third Row: John Trotti, David Van Felt, Raymond Depwe, Bob Fisk, Bill McDonald, Ken Boese, and Pearce Benzke.

Fourth Row: Coach Conover, James Wharton, John Gasow, Leon Parrish, Marvin Priddy, Latcher Simmons, and Bobby Heberlin.

Fifth Row: Allen Burkart, Olney Belts, Don Harmon, Steve Kerble, Billy Jack Dears, and Jackie Hall.

WE	SCORE	THEY
31	Barbark (S.A.)	0
40	Sam Houston (Houston)	0
0	Baytown	23
21	San Antonio Tech	27
35	Adrian (Dallas)	20
7	Port Neches	0
8	Port Arthur	28
13	Beaumont	0
15	Milby (Houston)	20
18	South Park (Beaumont)	7



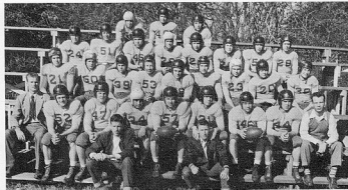
W SQUAD

First Row: Left to Right — Eugene Kemper, Charles Booty, John White, Jerry McGee, Charles King, Billy Breaux, James Authement, Bobby Mock, and Claude Wilson.

Second Row: David Broussard, Bud Gibbs, John Craig, Arland Dennis, Lawrence Rogers, Bryan Franks, Stuart Hazelwood, and Charles Morris.

Third Row: Clayton Traque, Don Gordon, Newton Tabba, Ira Zerka, Howard Bass, Junior Richard, Jerry Marks, O'Neill Gauthier.

Fourth Row: Jerald Burko, Jimmy Nod Truitt, Oscar Dickson, Sandle Sandford, Glenn Sartin, Jack Boxer, Stuart Mulhollen, and Grover Hallburton.



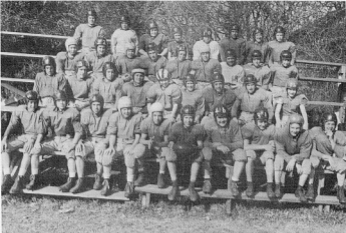
JUNIOR HIGH FOOTBALL

First Row: Left to Right — Lewis Estes, Glenn McGuire.

Second Row: Coach McCasren, Sherril Harris, John Reagan, R. L. Henderson, Jerry Gillmore, Kenneth Martin, Grover Carey, Ralph Beeson, and Coach Hill.

Third Row: Wayne Wilson, Chambers Jones, Sam Carpenter, Jerry Priddy, Charles Bourgo, Freddy Jackson, John Argen, Jimmy Windley, and Charles Nations.

Fourth Row: Parrell Cole, J. D. Mitchell, Edward Willey, Ezra Gordon, Luther Halpayne, Bart Campbell, Allen Beady and Clinton Smith.



FOOTBALL

First Row: Left to Right - Pat Turner, Bobby Humble, John Laird, Donald Hale, Bonnie Logan, Max Jones, Hogan Wharton, Buddy Burch, William Chemanik, and Travis Glaze.

Second Row: M. W. Honeycraft, Eugene Nance, Jimmy Bland, Lonnie Trotti, Brooks Conover, Fred Hodgkinson, Curtis Broussard, Kenneth Miller, and Ernest Brack.

Third Row: James Rogers, Gerald Thomas, Kenneth Bradberry, Earl Guidry, Billy Housman, Freeman DeLay, Edward Fowler, Charles LaBouef, and Gail Hogg.

Fourth Row: Travis Kendall, Bud Jones, Don Seaman, Donald Dean, Lloyd Broussard, Harry Dyson, John Dulon, and Barney Treadway.



JR. HIGH CHEERLEADERS

Bobby Hardin
Taffy Cowan
Carl Ray Pogerman

William Dietrich
Claudia Postra
Earnest Miller



Joan Parish



Betty Guidry



Sally Nimitz

Maids



ROBERT GOODSON
LETTERMAN END



BILLY DEAN
2 YEAR LETTERMAN
BACK



JOHNNY GASOW
LETTERMAN CENTER



WENDELL HARRIS
RESERVE TACKLE



ALLEN BURKART
LETTERMAN BACK



BILLY CLIVER
RESERVE END



Dale Lewis
DALE LEWIS
LETTERMAN END



MARVIN FRIDY
LETTERMAN END



JACKIE HALL
MANAGER



LEON FARRIS
LETTERMAN C



JOHN TROTTE
LETTERMAN TACKLE



CHARLES HONEYCUTT
RESERVE GUARD



TICO RAMIREZ
LETTERMAN GUARD



STEVE KEMBLE
LETTERMAN BACK



DANNY GORDI
2 YEAR LETTER
TACKLE



DON HARMON
2 YEAR LETTERMAN
BACK



WALTER HELIARD
RESERVE END



ZUBBA HERWIG
LETTERMAN TACKLE



HOWARD OWENS
LETTERMAN BACK



WILLIAM MCDONALD
3 YEAR LETTERMAN
ALL-DISTRICT C



COACH DAVIS
LINE COACH



COACH CONOVER
HEAD COACH



COACH BEAN
END COACH



COACH BRIDGES
"B" SQUAD COACH



COACH McCARSON
JUNIOR HIGH COACH



COACH HILL
JUNIOR HIGH COACH



COACH WHITEHEAD
JUNIOR HIGH COACH



PEARCE BENDE
2 YEAR LETTERMAN



BOBBY HEARSHEN
MANAGER



JAMES WHANTON
LETTERMAN CENTER



RAYMOND DEFWE
RESERVE TACKLE



BOB FISK
LETTERMAN END



GLENN LOOMIS
2 YEAR LETTERMAN
GUARD



CHARLES McATEE
RESERVE BACK



OLNEY BELTE
2 YEAR LETTERMAN
ALL-DISTRICT BACK



KEN REESE
2 YEAR LETTERMAN
BACK



DON GRANGER
LETTERMAN BACK



WALTER WILLIAMS
LETTERMAN END



LUTHER SIMMONS
LETTERMAN GUARD



WAYNE BAUGH
RESERVE BACK



Miss Fange
Sponson



Carroll



Babe



Skipper



Audie

Chickadees

'49

Lots of Fun
and
Pleasure



Frankie



Marilyn



"A" SQUAD

First Row: Skipper Weaver, Charles Ferrot, Charles Coynes, Bob Fisk, Lloyd Grubbs, and Fred Haley.

Second Row: Coach Davis, Marvin Friddy, Bobby Crew, Jackie Bond, Bill McDonald, Ken Reese, and Malcolm Clark, and Bobby Heatherlin, manager.



"B" SQUAD

First Row: Eugene Kemper, Dwayne Pankos, Allen Barkast, O'Neill Gauthier, Olney

MALCOLM CLARK
LETTERMAN FORWARD



BOBBY CREW
3 YEAR LETTERMAN
3 YEAR ALL-DISTRICT
FORWARD



DARREL SKIDMORE
LETTERMAN FORWARD



WE	SCORES	THEY
41	Bona	45
39	Sulphur	16
51	Elabeo	29
37	Hemphill	36
42	Newton	30
19	Warren	32
39	Sulphur	25
47	Elabeo	22
25	South Park	24
22	Beaumont	38
33	Lake Charles	37
38	Beaumont	48
23	Jett Davis	46
50	Lutkin	31
24	Sweeney	36
28	Port Arthur	39
28	South Park	32
32	Lake Charles	31
55	Port Neches	39
27	Beaumont	40
39	Port Arthur	45
44	South Park	38
48	Port Neches	31

KEN REESE
2 YEAR LETTERMAN
FORWARD



LLOYD GRUBBS
LETTERMAN GUARD



BOB FISK
LETTERMAN GUARD





JACKIE BOND
LETTERMAN CENTER



WILLIAM McDONALD
2 YEAR LETTERMAN
GUARD



MARVIN FRIDY
LETTERMAN CENTER

In 11AA conference play the Tigers finished in a tie for third with three wins and five losses. For the season the Bengals owned a much better record with twelve wins and dropping the same number of decisions. In tournament play the Tigers were runner-up in the Beaumont tourney, advanced to semi-finals in Kirbyville, and were downed in Consolation semi-finals in Houston. The most thrilling game of the season came when the Tigers played South Park. It wasn't because the game was close but the reason lay in Jackie Bond's sharp shooting. Jackie dropped 27 points through the hoop to set a record in individual scoring in this district.



SKIPPER WEAVER
2 YEAR LETTERMAN
GUARD



FRED HALEY
RESERVE FORWARD

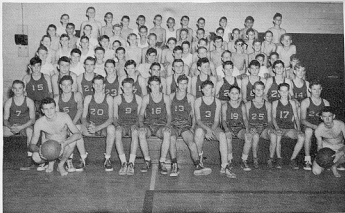


FRED HOGG
RESERVE CENTER



CHARLES FERBOTT
RESERVE GUARD

Little Mac



JUNIOR HIGH BASKETBALL TEAMS

First Row - Ed Barrett, Glenn McGuire.

Second Row - Sam Carpenter, Jack Goodwin, Lewis Eaton, Graves Cates, Bill Mann, J. W. Henry, Allen Besby, Carol Holt, Charles LeBeuf, Tommy Welch, Purcell Cole.

Third Row - Wayne Wilson, Edward Willey, Ralph Hemon, George Mobley, Luther Halpayna, R. D. Henderson, Jerry Gibbons, Sherril Harris, Charles Nations, Clinton Smith, Dan Bates, Bart Campbell.

Fourth Row - Dean Reeves, Robert Daze, Gail Hogg, Jack Welch, John Anger, William Cherauk, Jimmy Raul, Dickie Hebertin, Ernest Miles, Bonnie Logan, Dickie South.

Fifth Row - Donald Hale, Marshall Dickey, Pat Turner, Robert Anderson, Fernald Emmert, Ernest Beck, Gordon Lambert, Jerry Smith, David Palmer, Billy Rosenman, Foreman DeLay, Robert Hardin, Eugene Green, Eugene Mason.

Sixth Row - Max Jones, Harry Dwyer, Luther Mosey, Kenneth Bradberry, John Curtis, Derral Hart, Homer Jones, Bill Stonecipher, Fred Hodgkinson, John D. Seaman, James Fogans.

Seventh Row - Bobby Lanning, Kenneth Daily, James Tyra, Billy Ray Smith, Jimmy Towner, Bobby Cassett, Roger Guber, Billy Osborn, Lawrence Strout, Louis Peveta, Buddy Burch, Travis Kendall.



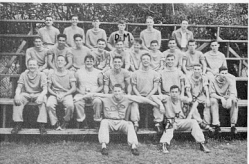
Big Jackie Bond makes two points against Sulphur as Orange wins, 39-16, in the Tigers' second game.

BASEBALL TEAM



Front Row — Coach Casavan, Allen Burkert, Jimmy Taylor, Don Ganga, Skipper Weaver, Olney Beltz, Jackie Kennedy, Claude Wilson, David Brounard, Howard Owens.
Middle Row — George Folland, Dale Lewis, Ralph Taylor, Milton Hubbard, Jimmy Arledge, Billy Long, Robert Barns, Mike Lingo, O'Neal Gauthier, Coach Hill.
Back Row — Duval Stillmore, John Gower, Jackie Bond, Ken Reem, Bill McDonald, Bob Fish, Bubba Herring, F. C. Kirkham, Robert Gordon, Coach Bridges.

TRACK TEAM



First Row — Billy Jack Dean, Jerry Marks.
Second Row — Jimmy Teattie, Charles Booty, Danny Gordon, Olney Beltz, Steve Keshin, Don Harman, Troy James, Jimmy Howell.
Third Row — Hens Evans, Jack Bowzer, Bobby Kelly, Billy Oliver, James Wharton, Tom Carter, Mickey McNamara, Charles Hubbard, Norman McLeilan, Bob Greenfield.
Fourth Row — Paul DuPuis, Eugene Kasper, Don Gordon, Don Mosier, Dennis Dilworth, Coach Dean.

GIRLS BASKETBALL TEAM

Freda Boss
Guard



Helen Hudson
Forward



Joanna Amacker
Guard



Nelda Hogg
Guard



SCORES	
WE	THEY
37	Part Aces 25
40	Orangefield 20
25	Vidor 15
50	Devers 49
28	Vidor 16
38	Vidor 56



Bobbie Hall
Forward



Ruby Hardin
Forward



First Row - Nell Prince, Elizabeth Palmer, Mildred Lambert, Sally Nisitz, Barbara Iaman, Barbara St. Germaine.
 Second Row - Bobbie Hall, Freda Boss, Agnes Harrie, Billie Tompkins, Ruby Hardin, Charlotte Copenhagen.
 Third Row - Miss Jo Laage - Coach, Nelda Hogg, Andrea Johnson - Manager, Joanna Amacker, Louise Wallace, Miss Lou Stewart - Coach.



Agnes Harrie
Forward

THE ORANGE PEEL



HOWARD CHENOWETH
BETTYEANNE HATCHER
JACK McLENDON
MARGARET BARRETT
ANDREA JOHNSTON

and

MARY E. EVERHEART, SPONSOR



VERNA
 BETSY
 CARROLL
 BOBBY
 JOANN
 PATSY
 BARBARA



THE "PEEL" STAFF

EDITOR-IN-CHIEF Margaret Barrett
 ASSOCIATE EDITOR Andrea Johnston
 ART EDITOR Jack McClendon
 TYPIST Barbara St. Germaine
 JUNIOR EDITOR Joan Jackson
 SOPHOMORE EDITORS . . Verna Prince and Betsy Bell
 SPORTS EDITOR Steve Kemble
 PHOTOGRAPHER Bobby Clough
 SPONSOR Mary E. Everheart



Mary Ann Williams



Andrea Johnston



QUILL & SCROLL

President - Steve Kerble
Vice-President - Joann Sanders

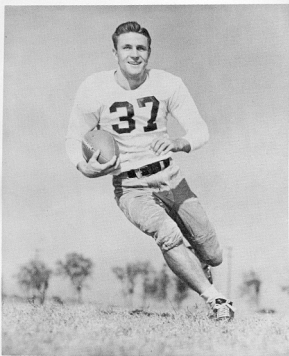
Secretary - Margaret Barrett
Reporter - Andrea Johnston

Steve Kerble, Jack McCleendon, Joann Sanders, Sally Ann Nantz,
Joan Parish, Margaret Barrett, and Marion Gibbs.

HOMEROOM REPRESENTATIVE FOR THE ORANGE PEEL.

108	Dorothy Pettigrew	Raymond Dapwe	144
109	Norma Saxon	Jeanette Skinner	147
110	Patsy Jett	Louise Wallace	204
111	Dorothy Johns	Jackie Biley	205
112	Babs Few	Barbara Chisum	208
113	Joan Webb	Charlotte Plant	211
121	Claude Wilson	Jack McCleendon	212
127	Dennis Dilworth	Wanda Craft	213
136	Carol Manning	Marie Strother	214
137B	Beth Coezyer	Beverly Fife	216
137A	Avisene Dumas	Jacqueline Gornay	217
143	Patsy Prudy	Barbara Bauer	201

The most beautiful girl of Stark High School for the year 1948-49 was selected by Doak Walker, the outstanding college football player of the Southwest. The Orange Peel is proud to present your Beauty Queen of the year and those who were nominated with her.



I appreciate greatly the honor of having been asked to select the beauty for your high school yearbook.

It was a difficult assignment, as all the girls whose pictures you sent to me seem to be quite charming and lovely to look at. Since you asked me to select only one of them, however, I have marked "First Choice" on the picture of the girl whom I consider the most beautiful.

I am returning the pictures to you, along with the photograph of me which you requested.

Again, many thanks for this honor, and every good wish for the success of your yearbook.

Sincerely,

Donk Walker

Donk Walker

Beauty



Joann Jackson



Betsy Ann Bell



Barbara Luft





June Depue



Agnes Harris

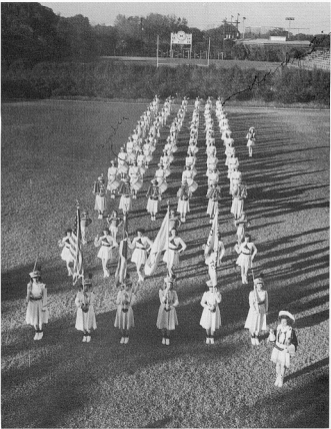


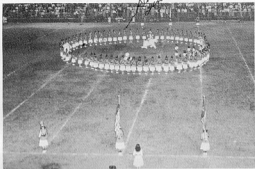
Freda Ross



Betsy Ann Bell
Beauty Queen, '49

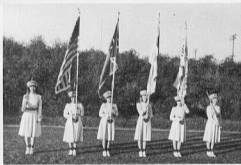
BENGAL GUARDS





County Fair Circus Stunt
By Bengal Guards

The Flag Bearers



The Majorettes
and the
Mascots





NORMA COWGER
HEAD SIGNAL DRUM MAJOR

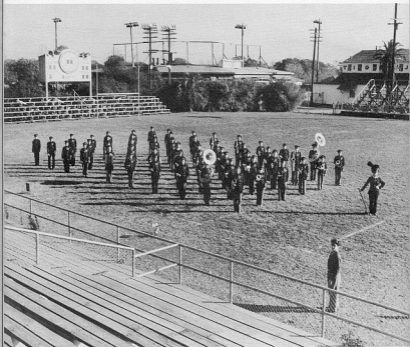


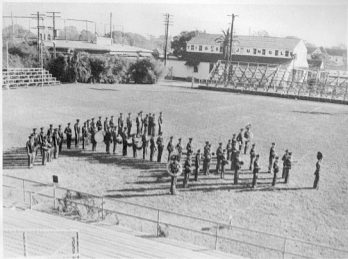
VIRGINIA BELL
ASST. SIGNAL DRUM MAJOR



HELEN MAC DONALD

BENGAL LANCERS





Bengal Lancers In An Anchor Formation





MR. PAUL PEARSON, PRINCIPAL OF STARK SENIOR HIGH



MR. L. A. CAWYER, PRINCIPAL OF CARR JUNIOR HIGH

SENIOR CLASS

OFFICERS



BOBBY CREW
PRESIDENT
KING '49
BASKETBALL CAPTAIN '48-'49
GOOD SPORTSMANSHIP AWARD



DON GRANGER
VICE PRESIDENT
FOOTBALL "B" '48, "A" '49
JUNIOR FAVORITE
BASEBALL '47-'48



JERRY STEPHENS
SECRETARY
SENATE
SECRETARY ISH END CLUB
TIGER SCRATCHES STAFF



WALTER WILLIAMS
TREASURER
FOOTBALL
TRACK



ANDREA JOHNSTON
REPORTER
BASKETBALL MANAGER '49
GOOD SPORTSMANSHIP LEAGUE '48
ORANGE PEEL ASSOCIATE EDITOR



FLORENCE ABSHIRE
ISH END CLUB



POMPOZA ALMAGUER



JOANN AMACKER
BASKETBALL '47, '49

SENIORS

